

**SITE LEGEND**

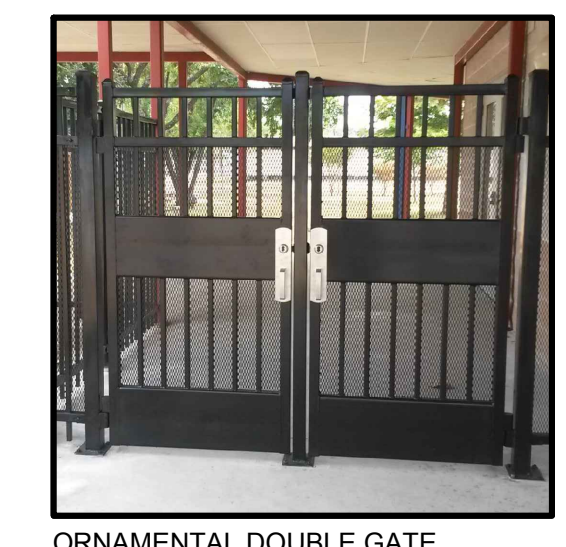
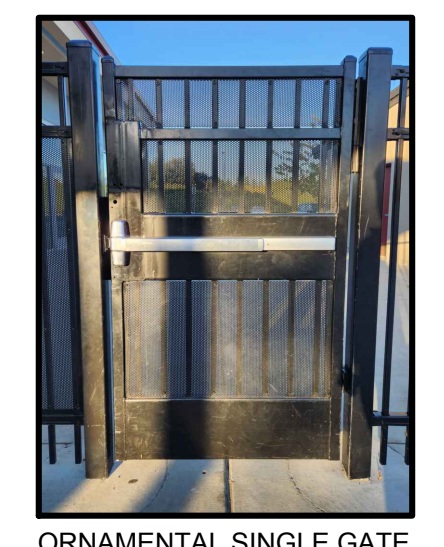
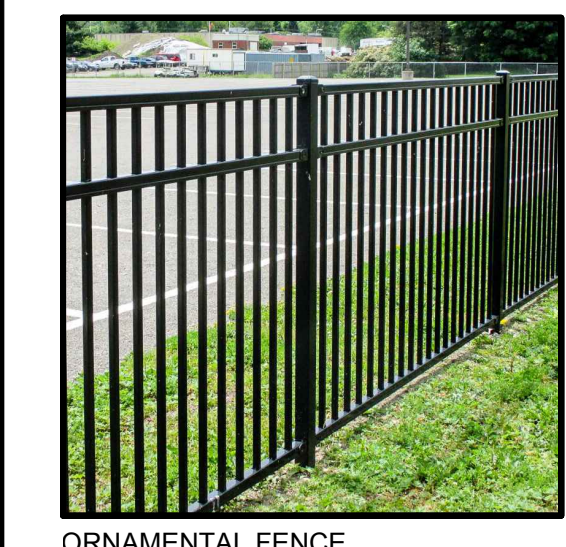
SYMBOL	DESCRIPTION
	PROPERTY LINE
	LIMIT OF WORK
	(E) CONDITIONS, SEE TOPOGRAPHIC SURVEY
	(E) EMERGENCY VEHICLE ACCESS LANE EXISTING DSA #01-115484

**MATERIALS LEGEND**

SYMBOL	KEY	DESCRIPTION
	C1	CONC PAVING TYPE C2, PEDESTRIAN COLOR: NATURAL W/ LAMP BLACK FINISH: MEDIUM SANDBLAST
<b>FENCING AND GATE (BLACK POLYOLEFIN COATED)</b>		
	F1	4' HIGH BLACK-COATED CHAIN LINK FENCE, MATCH EXISTING
	F2	4' HIGH GALVANIZED CHAIN LINK FENCE WITH YELLOW CAP TO CLOSE GAP IN FENCE, MATCH EXISTING
	F3	6' HIGH ORNAMENTAL FENCE MFR: AMERISTAR ASSA ABL0Y, (BLACK), OR EQUAL
	F4	6' HIGH GALVANIZED CHAIN LINK FENCE, MATCH EXISTING
	F5	6' HIGH BLACK-COATED CHAIN LINK FENCE
	G1	6'-0" HIGH, 10' WIDE DOUBLE MAINTENANCE GATE, GALVANIZED CHAIN LINK
	G2	6'-0" HIGH, 7' WIDE DOUBLE PEDESTRIAN GATE WITH AD400 SCHLAGE AUTOMATED LOCKS AND PANIC HARDWARE (3'-6" WIDE WITH CENTER STRIKE POST), ORNAMENTAL
	G3	4'-0" HIGH, 4' WIDE MAINTENANCE GATE, BLACK COATED CHAIN LINK, MATCH EXISTING
	G4	6'-0" HIGH, 3'-6" WIDE SINGLE PEDESTRIAN GATE WITH AD400 SCHLAGE AUTOMATED LOCK AND PANIC HARDWARE, BLACK COATED CHAIN LINK
	G5	6'-0" HIGH, 3' WIDE SINGLE PEDESTRIAN GATE, ADJACENT TO DUGOUT, MATCH EXISTING AND CONNECT TO EXISTING FENCE
	G6	6'-0" HIGH, 12'-6" WIDE VEHICULAR GATE WITH 4' WIDE MAINTENANCE GATE, ORNAMENTAL
	G7	6' HIGH, 20'-0" WIDE EVA GATE, ORNAMENTAL
	G8	4'-0" HIGH, 10' WIDE DOUBLE MAINTENANCE GATE, GALVANIZED CHAIN LINK W/ YELLOW CAP TO MATCH EXISTING
	G9	4'-0" HIGH, 4' WIDE SINGLE MAINTENANCE GATE, GALVANIZED CHAIN LINK W/ YELLOW CAP TO MATCH EXISTING
	G10	(E) DOUBLE MAINTENANCE GATE. REMOVE POSTS AND FABRIC. REPLACE HARDWARE. COMPLETE WITH DISTRICT STANDARD. CONTRACTOR TO PAINT (E) POSTS BLACK
	G11	(E) SINGLE MAINTENANCE GATE. REMOVE POSTS AND FABRIC. REPLACE HARDWARE. COMPLETE WITH DISTRICT STANDARD. CONTRACTOR TO PAINT (E) POSTS BLACK

**NOTES**

KEY	DESCRIPTION
	REMOVE 4' HIGH CHAINLINK FENCE POSTS, FABRIC, HARDWARE, AND FOOTINGS COMPLETE. REPAIR AREA IN KIND
	REMOVE 6' HIGH CHAINLINK FENCE, GATES, POSTS, FABRIC, HARDWARE, AND FOOTINGS COMPLETE. REPAIR AREA IN KIND. PROTECT ADJACENT BUILDINGS
	COORDINATE RELOCATION OF (E) BENCH WITH DISTRICT
	ALL HAND WORK AROUND TREES FOR IMPROVEMENTS TO MINIMIZE IMPACT TO TREE ROOTS AND UTILITIES. POTHOLE FOR EXISTING UTILITIES WHERE SHOWN.
	REMOVE AND REPLACE PRIVACY SLATS AND MATCH (E) COLOR ON SITE. PROTECT TRASH ENCLOSURE IN PLACE.
	REMOVE AND REPLACE CHAINLINK FABRIC, WITH POSTS TO REMAIN. PAINT TWO COATS ON (E) POSTS AND HARDWARE.
	REMOVE (E) CHAINLINK FENCE PANELS IN PLANTER. POSTS, FABRIC, HARDWARE, AND FOOTINGS COMPLETE. REPAIR AREA IN KIND
	PROTECT (E) UTILITY ENCLOSURE IN PLACE
	REMOVE 3 (E) BOLLARDS, AND FOOTINGS COMPLETE. REPAIR AREA IN KIND
	PROTECT (E) T-BALL BACKSTOP



ARCHITECT/ENGINEER

STAMP

DESIGN TEAM

**CARDUCCI ASSOCIATES**  
555 BEACH STREET FOURTH FLOOR  
SAN FRANCISCO, CA 94133  
www.carducciassociates.com  
© 2021 CARDUCCI ASSOCIATES, INC.



OWNER

**MOUNTAIN VIEW WHISMAN SCHOOL DISTRICT**

PROJECT

**MONTA LOMA FIELDS**

460 THOMPSON AVE,  
MOUNTAIN VIEW, CA 94043

CONTEXT MAP

# DESCRIPTION DATE

SCHEMATIC DESIGN

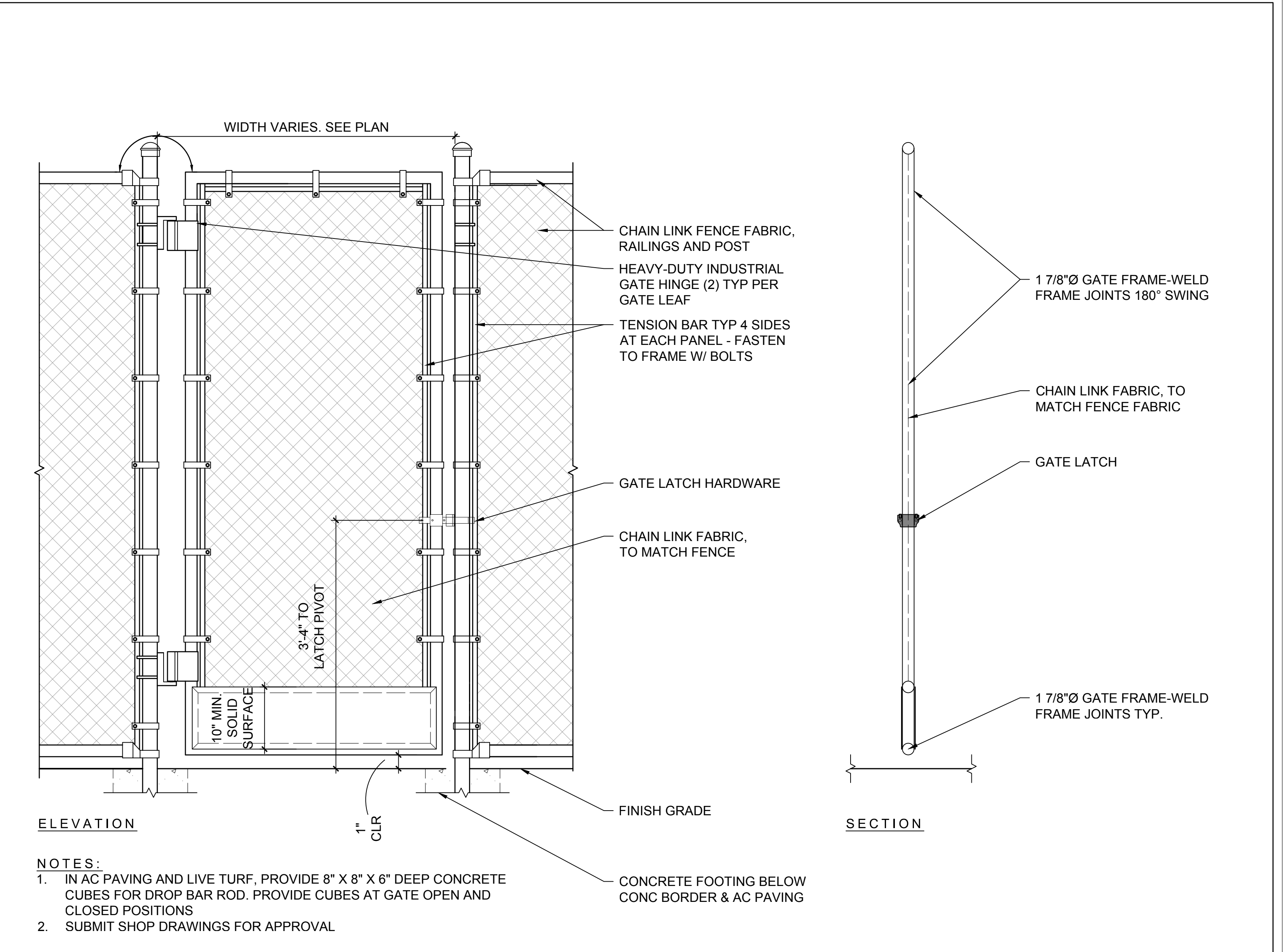
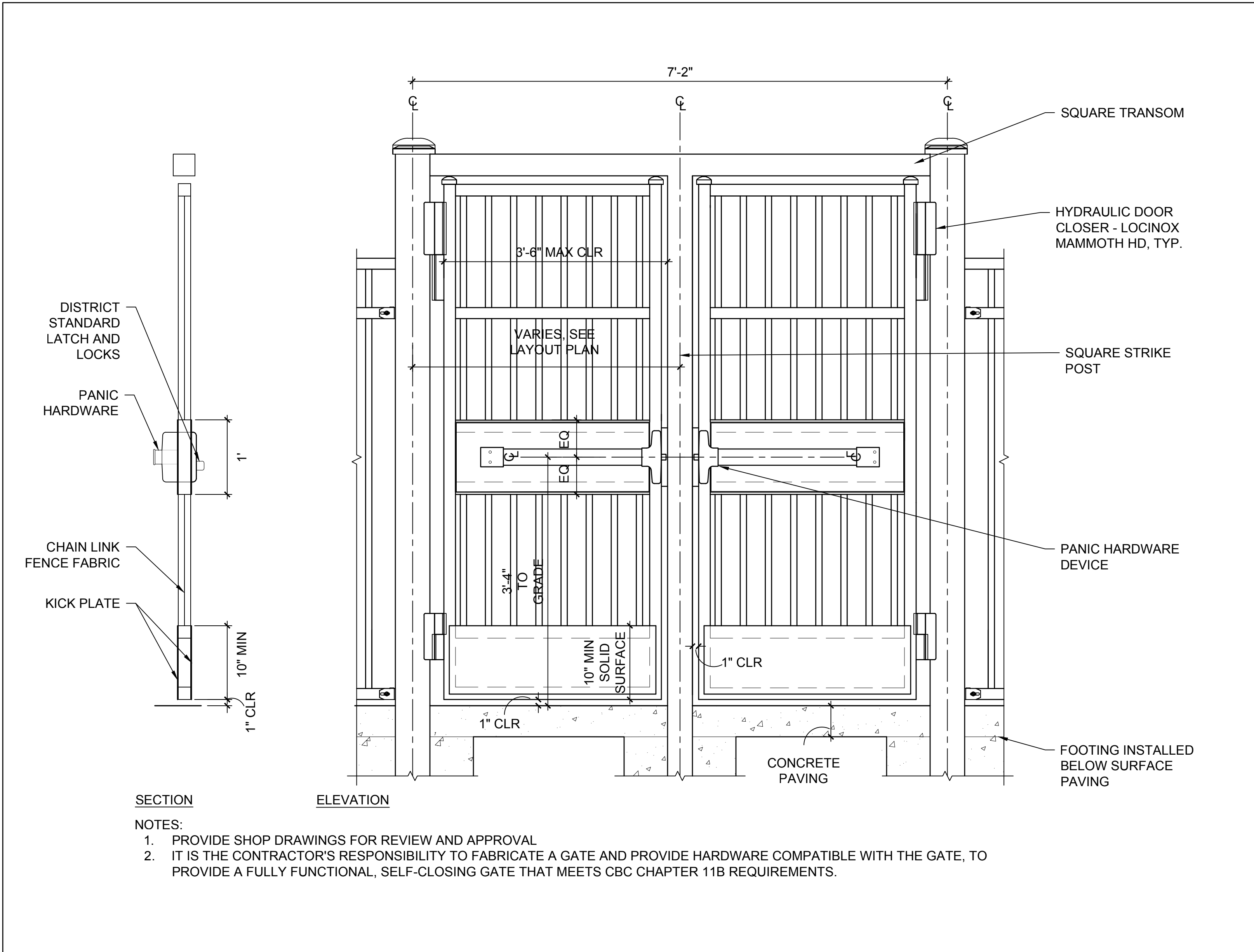
DATE: MM.DD.YEAR  
SCALE: AS SHOWN  
PROJECT NO: MW21-01  
SHEET TITLE

SD PLAN

SHEET NUMBER

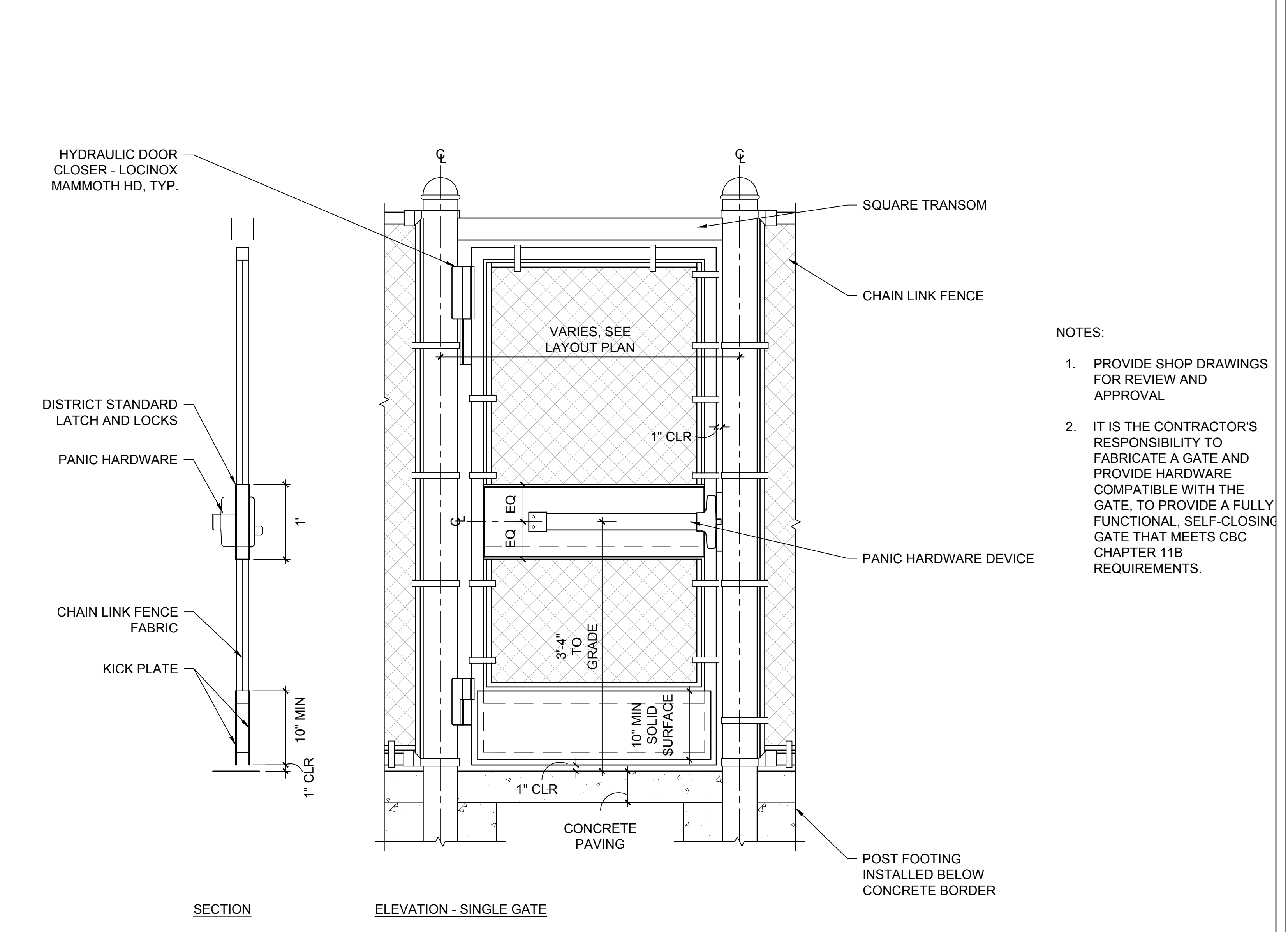
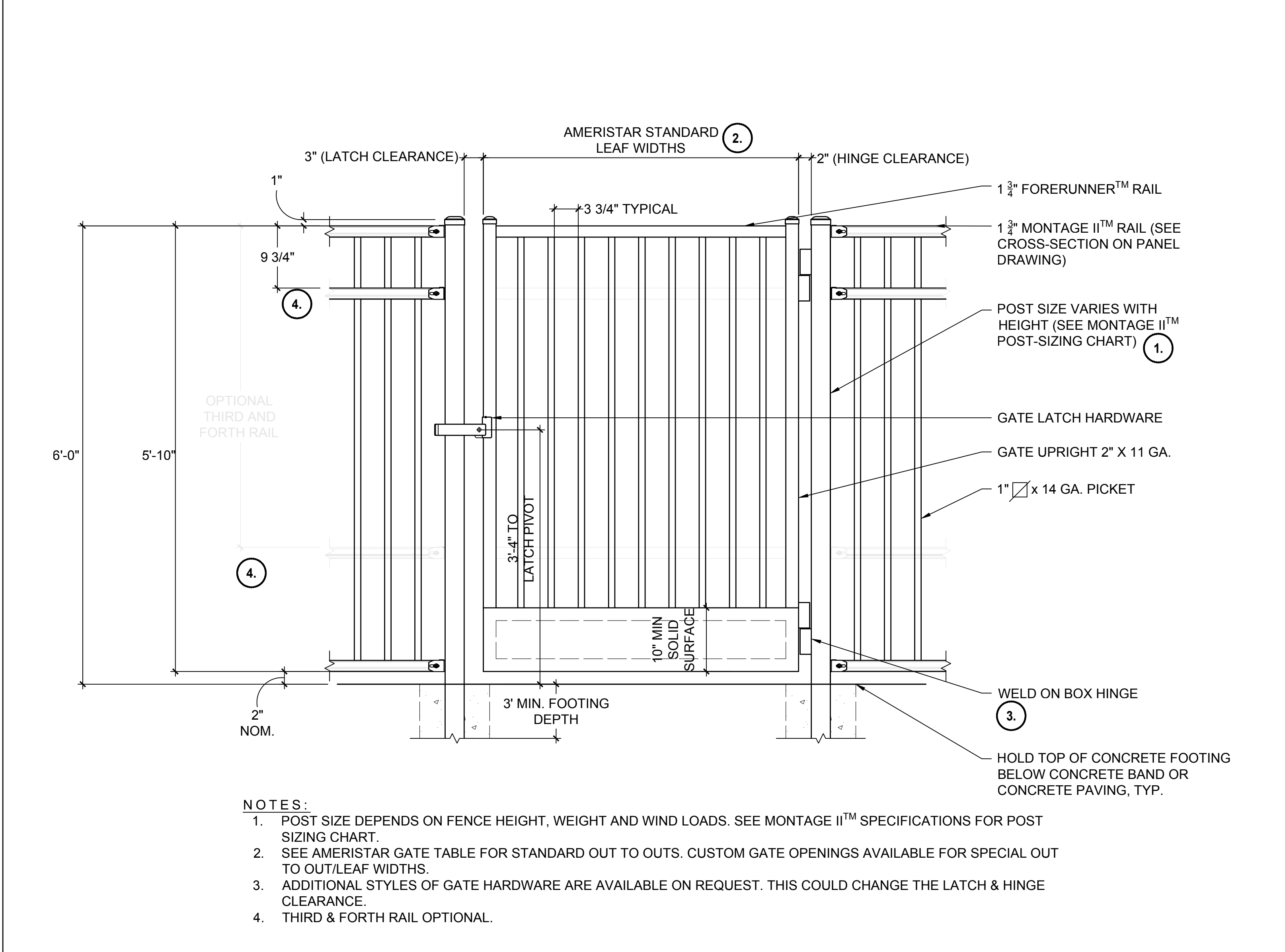
L1

-- OF --



**3 DOUBLE ORNAMENTAL GATE**  
SCALE: 1" = 1'

**1 SINGLE MAINTENANCE CHAINLINK GATE**  
SCALE: 1" = 1'



**4 SINGLE ORNAMENTAL GATE**  
SCALE: 1" = 1'

**2 SINGLE PEDESTRIAN CHAINLINK GATE WITH PANIC HARDWARE**  
SCALE: 1" = 1'

ARCHITECT/ENGINEER

STAMP

DESIGN TEAM

**CARDUCCI ASSOCIATES**  
555 BEACH STREET FOURTH FLOOR  
SAN FRANCISCO, CA 94133  
www.carducciassociates.com  
© 2021 CARDUCCI ASSOCIATES, INC.



OWNER

**MOUNTAIN VIEW WHISMAN SCHOOL DISTRICT**

PROJECT

**MONTA LOMA FIELDS**

460 THOMPSON AVE.  
MOUNTAIN VIEW, CA 94043

CONTEXT MAP

#	DESCRIPTION	DATE

**SCHEMATIC DESIGN**

DATE: MM.DD.YEAR

SCALE: AS SHOWN

PROJECT NO: MW21-01

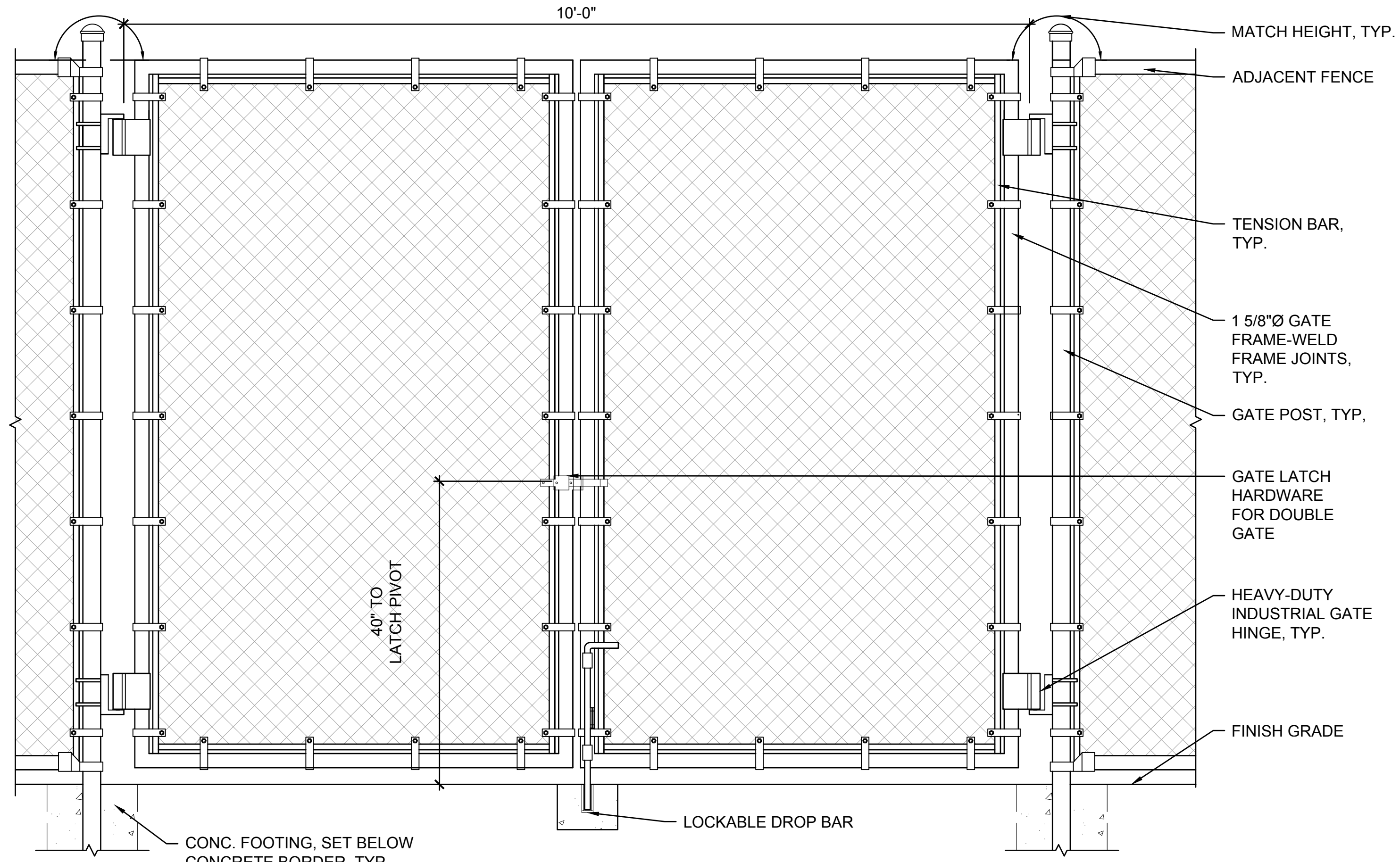
SHEET TITLE

**SD DETAILS - FENCING & GATES**

SHEET NUMBER

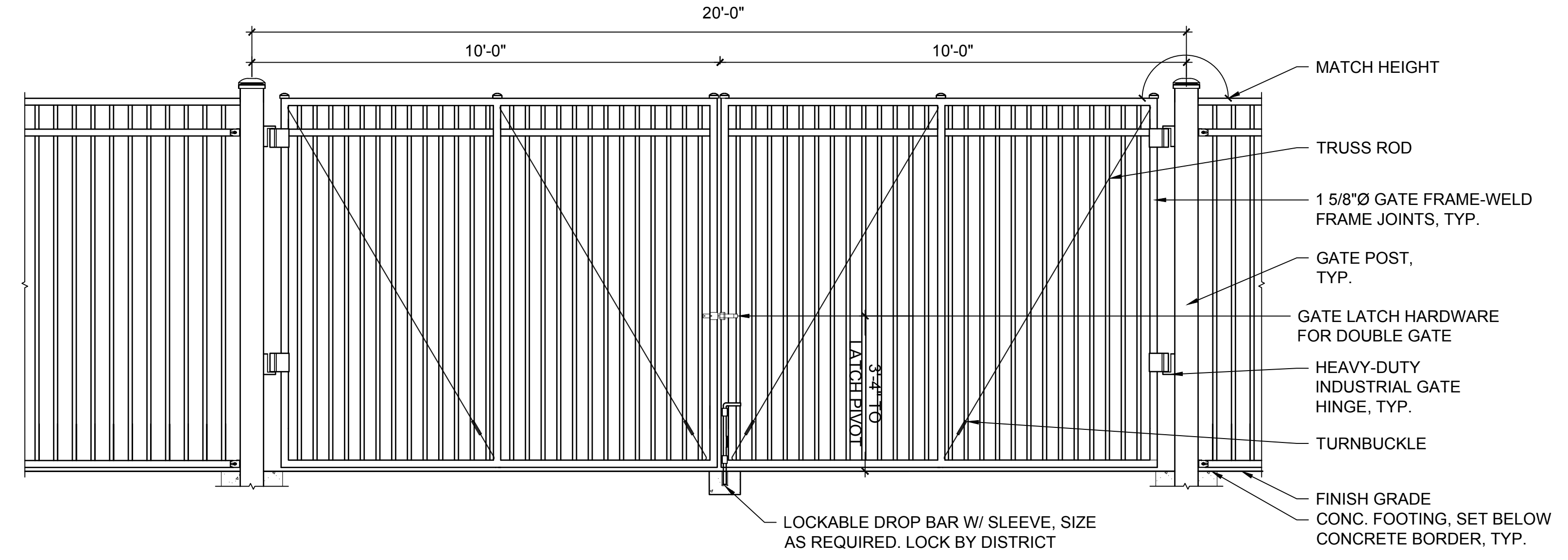
**L2**

-- OF --



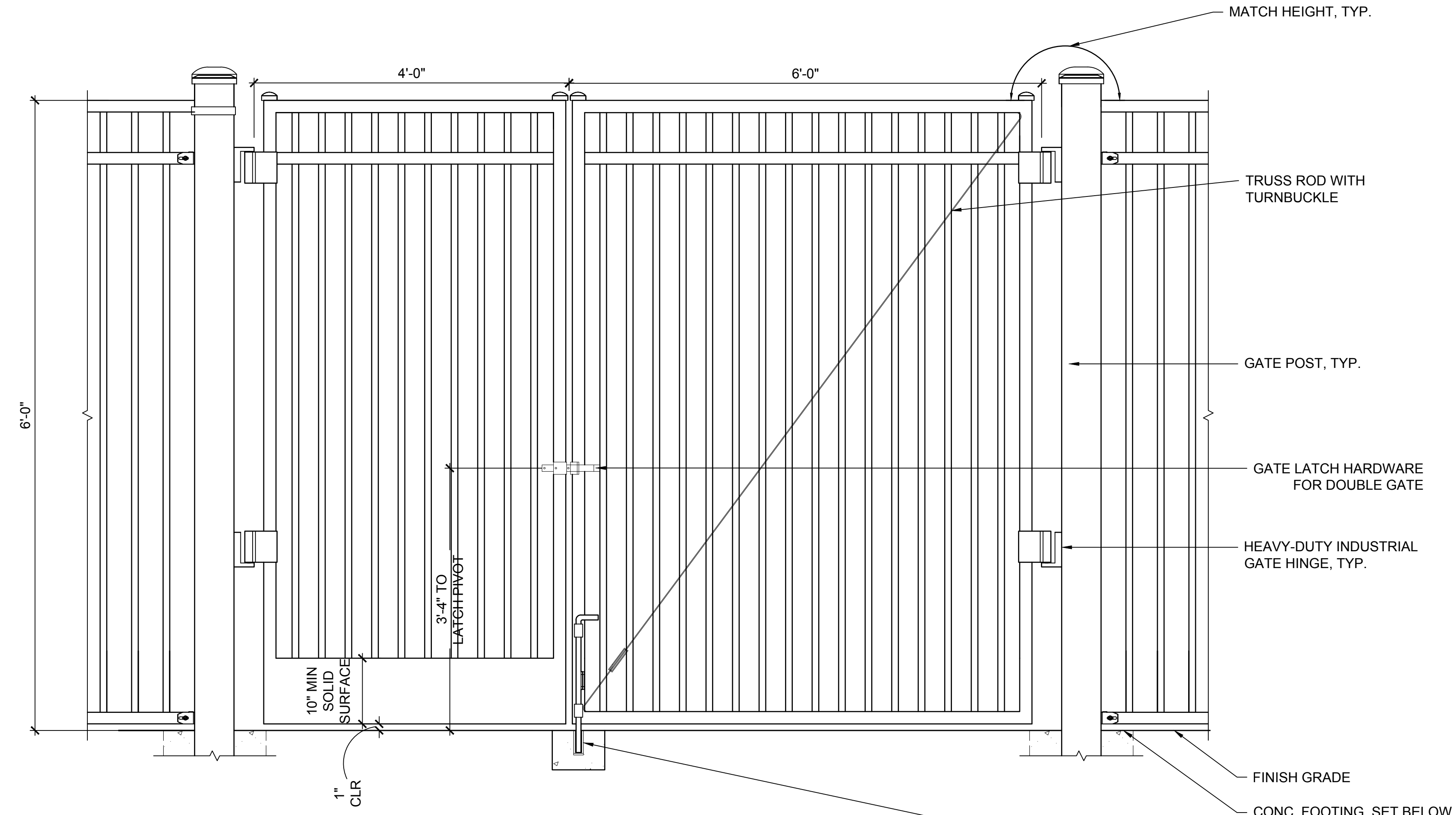
NOTES:  
 1. IN AC PAVING AND LIVE TURF, PROVIDE 8" X 8" X 6" DEEP CONCRETE CUBES FOR DROP BAR ROD. PROVIDE CUBES AT GATE OPEN AND CLOSED POSITIONS

**3** DOUBLE 10' MAINTENANCE CHAIN LINK GATE  
 SCALE: 1" = 1'



NOTES:  
 1. IN AC PAVING AND LIVE TURF, PROVIDE 8" X 8" X 6" DEEP CONCRETE CUBES FOR DROP BAR ROD. PROVIDE CUBES AT GATE OPEN AND CLOSED POSITIONS

**1** DOUBLE 20' CHAINLINK EVA GATE  
 SCALE: 1/2" = 1'



NOTES:  
 1. IN AC PAVING AND LIVE TURF, PROVIDE 8" X 8" X 6" DEEP CONCRETE CUBES FOR DROP BAR ROD. PROVIDE CUBES AT GATE OPEN AND CLOSED POSITIONS

**2** DOUBLE MAINTENANCE ASYMMETRICAL ORNAMENTAL GATE  
 SCALE: 1" = 1'

ARCHITECT/ENGINEER

STAMP

DESIGN TEAM

**CARDUCCI ASSOCIATES**  
 555 BEACH STREET FOURTH FLOOR  
 SAN FRANCISCO, CA 94133  
 www.crducciasociates.com  
 © 2021 CARDUCCI ASSOCIATES, INC.



STAMP

OWNER

**MOUNTAIN VIEW WHISMAN SCHOOL DISTRICT**

PROJECT

**MONTA LOMA FIELDS**

460 THOMPSON AVE,  
 MOUNTAIN VIEW, CA 94043

CONTEXT MAP

#	DESCRIPTION	DATE

**SCHEMATIC DESIGN**

DATE: MM, DD, YEAR  
 SCALE: AS SHOWN  
 PROJECT NO: MW21-01  
 SHEET TITLE

**SD DETAILS - FENCING & GATES**

SHEET NUMBER

**L3**

-- OF #

1/12/2024 4:26 PM

ONLY THE ORIGINAL SIGNED HARD COPY OF THIS DRAWING CONSTITUTES THE CONTRACT. IF THE CONTRACTOR ENCOUNTERS ERRORS OR DISCREPANCIES ON THE DRAWINGS, OR SITE CONDITIONS WHICH PRESENT OR DELAY THE COMPLETION OF WORK, AS INDICATED, THE CONTRACTOR SHALL NOTIFY THE OWNER AND LANDSCAPE ARCHITECT BY THE TIME OF MEET OF ALL DISCREPANCIES OR DISCREPANCIES AT THE TIME OF BID. IF THE CONTRACTOR ENCOUNTERS ERRORS OR DISCREPANCIES ON THE DRAWINGS, OR SITE CONDITIONS WHICH PRESENT OR DELAY THE COMPLETION OF WORK, AS INDICATED, THE CONTRACTOR SHALL NOTIFY THE OWNER AND LANDSCAPE ARCHITECT AND THE OWNER'S ARCHITECT AND HOLD THE LANDSCAPE ARCHITECT AND THE OWNER'S ARCHITECT RESPONSIBLE FOR THE ERRORS OR DISCREPANCIES. THE CONTRACTOR SHALL INDEMNIFY AND HOLD THE LANDSCAPE ARCHITECT AND THE OWNER'S ARCHITECT HARMLESS FROM AND AGAINST ALL SUCH CLAIMS, DAMAGES, LOSSES AND EXPENSES, INCLUDING REASONABLE ATTORNEY'S FEES, THAT MAY BE ASSERTED AGAINST OR INCURRED BY THE LANDSCAPE ARCHITECT OR THE OWNER'S ARCHITECT.